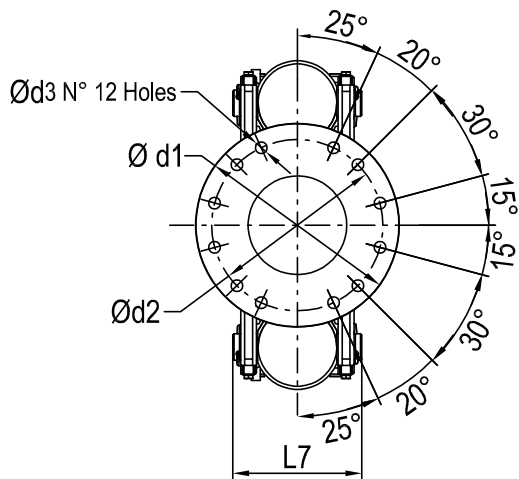
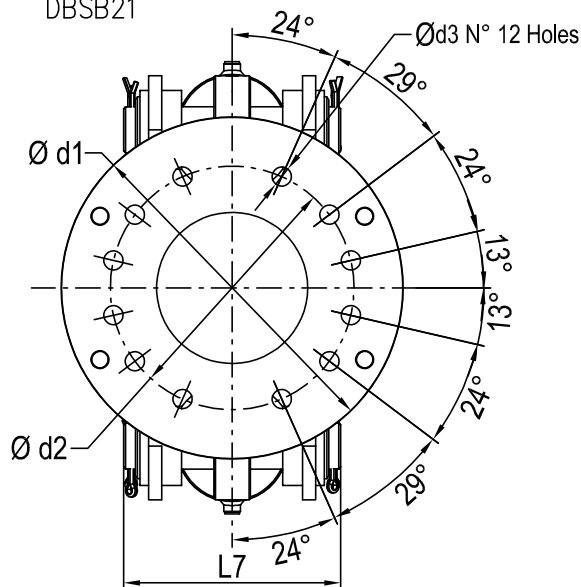


DBSB01



DBSB21



TYPE	HOLDING FORCE (kN)	L1	L2	L3	L4	L5	L6	L7	L8	L9	L10	d1	d2	d3	S	S1	WEIGHT (kg)
DBSB01-130	130	580	35	250	250	370	100	200	30	10	30	310	260	18	10	12	280
DBSB21-300	300	750	50	345	345	530	180	330	30	10	30	520	370	30	10	12	620

**NOTE**

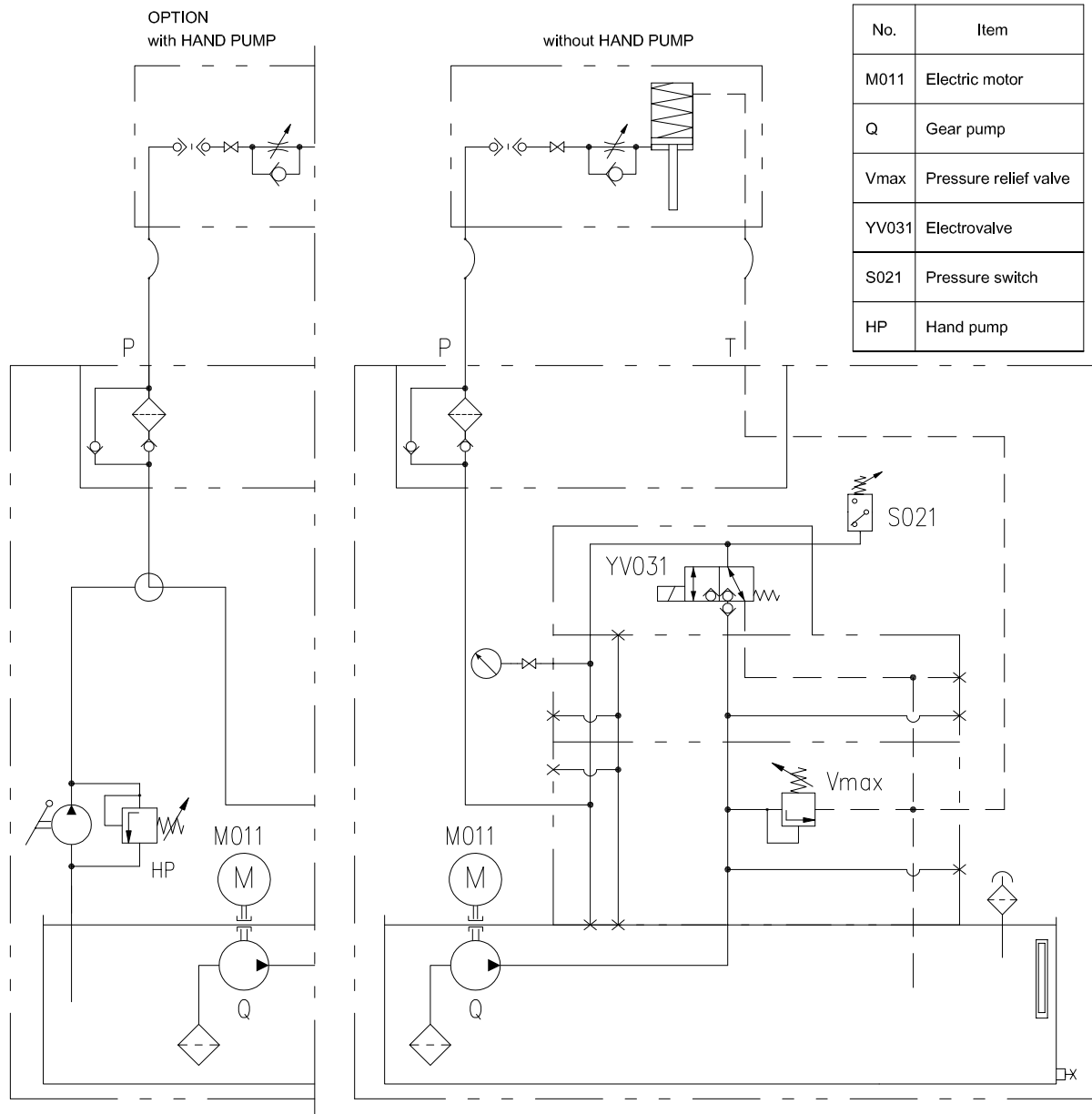
Rail hardness between 200 and 270 HB  
( $\sigma = 70 \div 90 \text{ daN/mm}^2$ )

In case of different values we must be informed at order because this could affect the rail clamp functioning.

(\*\*) CONNECTION SCREWS CLASS :10.9 ARE TO BE FORESEEN

All dimensions in mm

Alterations reserved without notice

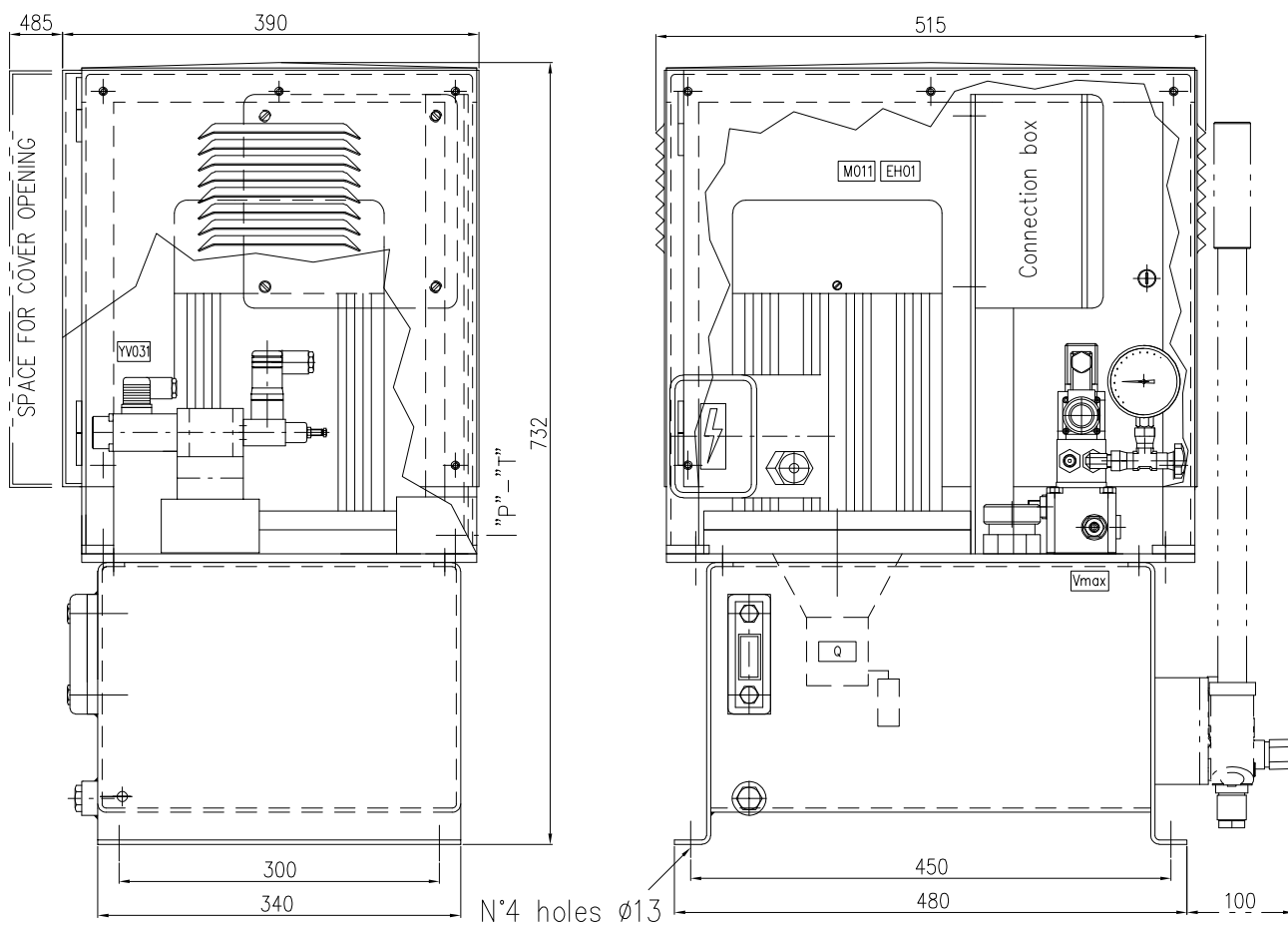


No.	Item
M011	Electric motor
Q	Gear pump
Vmax	Pressure relief valve
YV031	Electrovalve
S021	Pressure switch
HP	Hand pump

TYPE	* M011 (kW) 400V-50Hz	Q (l/min) (cm <sup>3</sup> /rev)	Tank capacity (l)	* YV031	P-T	Weight without HP (kg)	Weight with HP (kg)	OPENING TIMES (s) (suitable for one brake)				
								DBSB01 DBSBT01	DBSBT11	DBSB21 DBSBT21	DBSBT31	DBSBT41
SCI-DBSB10-5	1,5	4,5 3,2	10	24V DC-30W	G3/8"	60	65	2,2	2,8	4,5	6	7,5
SCI-DBSB20-7.5	3	7 4,8	20	24V DC-30W	G3/8"	75	80	1,4	1,7	2,7	3,7	4,7
* = OTHER FEEDING VOLTAGE ON REQUEST								OTHER OPENING TIMES ON REQUEST				

CALIBRATION		
Type of brake	Pressure relife valve	Pressure switch
DBSB01/DBSBT01	18 MPa	↑15-13 ↓ MPa
DBSBT11	24 MPa	↑21-20 ↓ MPa
DBSB21/DBSBT21	24 MPa	↑21-20 ↓ MPa
DBSBT31	24 MPa	↑21-20 ↓ MPa
DBSBT41	21 MPa	↑18-17 ↓ MPa

### SCI-DBSB20-7.5



### SCI-DBSB10-5

